

Monthly Reporting

Report from 01 April 2015 to 30 April 2015

Report for Resource Pool XC on ARCHER

A total of 1,275,264 kAU were available during this period.

Use and Allocations (by Project)

In the following table Charged refers to usage which was charged against the project Allocation. This excludes any usage discounted via incentive schemes. The (Allocation) column is the time allocated to the project, scaled according to the reporting period and shown as a fraction of the available resources.

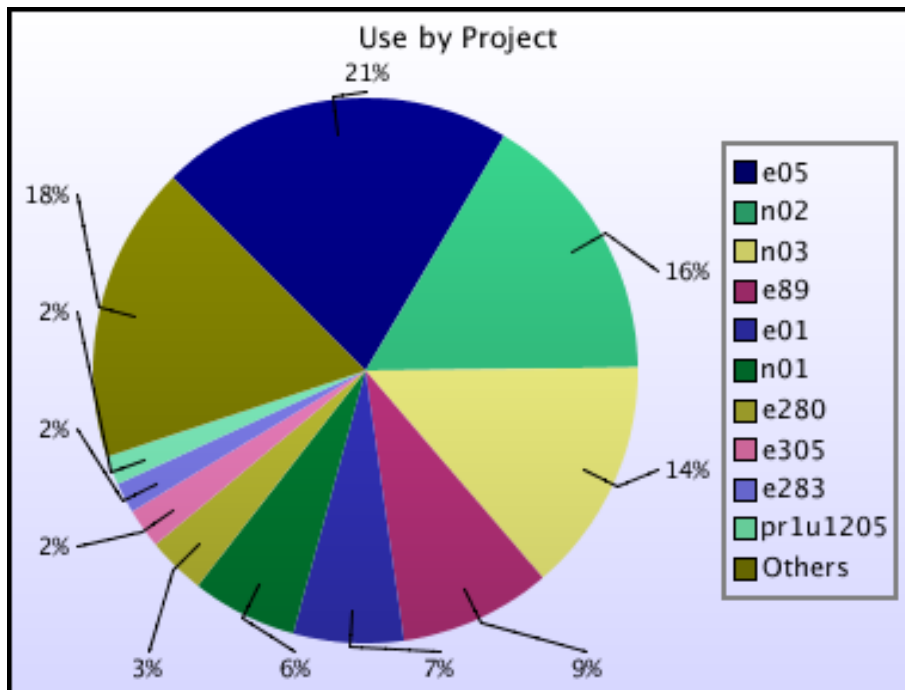
Project	Project Class	Number of Jobs	Charged kAUs	Charged Utilisation	Used kAUs	Utilisation	Allocation
e01	Consortia	785	72,782.4	5.71%	78,557.4	6.16%	7.09%
e05	Consortia	20,999	244,303.8	19.16%	252,320.3	19.79%	13.41%
e89	Consortia	5,645	108,265.0	8.49%	108,294.9	8.49%	12.11%
e280	Consortia	13,860	41,467.3	3.25%	41,469.3	3.25%	3.90%
e281	Consortia	457	15,566.3	1.22%	15,826.9	1.24%	2.08%
e283	Consortia	444	21,626.8	1.70%	21,626.8	1.70%	1.66%
e305	Consortia	635	28,452.9	2.23%	28,455.6	2.23%	2.15%
e410	Leadership Awards	39	1,620.9	0.13%	1,620.9	0.13%	0.40%
e413	Leadership Awards	31	103.5	0.01%	103.5	0.01%	0.30%
e414	Leadership Awards	20	2,025.2	0.16%	2,025.2	0.16%	0.31%
c01	Class1a	90	368.1	0.03%	368.1	0.03%	0.13%
e10	Class1a	48	125.5	0.01%	125.5	0.01%	0.60%
e71	Class1a	24	213.8	0.02%	214.1	0.02%	0.20%
e110	Class1a	29	5,754.5	0.45%	5,754.5	0.45%	0.33%
e125	Class1a	173	9,193.5	0.72%	9,193.5	0.72%	0.26%
e174	Class1a	112	922.6	0.07%	922.6	0.07%	0.38%
e175	Class1a	42	148.8	0.01%	2,753.5	0.22%	0.14%
e179	Class1a	22	2,376.4	0.19%	2,376.5	0.19%	0.36%
e182	Class1a	0	0.0	0.00%	0.0	0.00%	0.03%
e184	Class1a	112	4,018.2	0.32%	4,018.2	0.32%	0.22%
e191	Class1a	44	1,245.0	0.10%	1,245.0	0.10%	0.14%
e202	Class1a	39	4,748.1	0.37%	4,748.1	0.37%	3.59%
e220	Class1a	105	408.3	0.03%	408.3	0.03%	0.04%
e228	Class1a	0	0.0	0.00%	0.0	0.00%	0.04%
e229	Class1a	140	3,263.2	0.26%	3,301.3	0.26%	0.04%
e266	Class1a	258	1,650.0	0.13%	1,650.0	0.13%	0.69%
e268	Class1a	0	0.0	0.00%	0.0	0.00%	0.04%
e272	Class1a	703	5,000.3	0.39%	5,000.3	0.39%	0.13%
e282	Class1a	121	223.0	0.02%	223.0	0.02%	0.06%
e290	Class1a	273	36.3	0.00%	30.9	0.00%	0.01%
e291	Class1a	0	0.0	0.00%	0.0	0.00%	0.06%
e300	Class1a	32	1,616.7	0.13%	1,616.7	0.13%	0.06%
e301	Class1a	39	2,008.6	0.16%	2,008.6	0.16%	0.07%
e304	Class1a	553	186.5	0.01%	186.5	0.01%	0.55%
e320	Class1a	0	0.0	0.00%	0.0	0.00%	0.17%
e330	Class1a	0	0.0	0.00%	0.0	0.00%	0.01%
e331	Class1a	58	315.5	0.02%	315.5	0.02%	0.11%
e332	Class1a	0	0.0	0.00%	0.0	0.00%	0.05%
e333	Class1a	129	13,232.5	1.04%	13,236.5	1.04%	0.34%
e336	Class1a	2	0.1	0.00%	0.1	0.00%	0.01%
e342	Class1a	0	0.0	0.00%	0.0	0.00%	0.04%
e343	Class1a	472	1,015.5	0.08%	1,015.5	0.08%	0.11%
e358	Class1a	0	0.0	0.00%	0.0	0.00%	0.06%
e364	Class1a	0	0.0	0.00%	0.0	0.00%	0.06%
e365	Class1a	0	0.0	0.00%	0.0	0.00%	0.11%
e375	Class1a	0	0.0	0.00%	0.0	0.00%	0.22%
e377	Class1a	0	0.0	0.00%	0.0	0.00%	0.14%
e378	Class1a	0	0.0	0.00%	0.0	0.00%	0.37%

Project	Project Class	Number of Jobs	Charged kAUs	Charged Utilisation	Used kAUs	Utilisation	Allocation
e385	Class1a	96	14,515.0	1.14%	14,515.0	1.14%	1.25%
e403	Class1a	0	0.0	0.00%	0.0	0.00%	0.00%
e313	Direct Access: ARCHER RAP	36	4,823.2	0.38%	6,841.1	0.54%	0.09%
e316	Direct Access: ARCHER RAP	0	0.0	0.00%	0.0	0.00%	0.04%
e321	Direct Access: ARCHER RAP	44	6,277.1	0.49%	6,277.1	0.49%	0.03%
e338	Direct Access: ARCHER RAP	25	518.5	0.04%	518.5	0.04%	0.42%
e339	Direct Access: ARCHER RAP	25	3,934.2	0.31%	3,934.2	0.31%	0.39%
e347	Direct Access: ARCHER RAP	53	682.0	0.05%	682.0	0.05%	0.07%
e348	Direct Access: ARCHER RAP	294	1,960.6	0.15%	1,960.6	0.15%	0.30%
e351	Direct Access: ARCHER RAP	2	173.3	0.01%	173.3	0.01%	0.04%
e352	Direct Access: ARCHER RAP	100	1,009.4	0.08%	1,009.4	0.08%	0.12%
e354	Direct Access: ARCHER RAP	0	0.0	0.00%	0.0	0.00%	0.08%
e355	Direct Access: ARCHER RAP	7,101	2,821.4	0.22%	2,821.4	0.22%	0.20%
e356	Direct Access: ARCHER RAP	9	842.6	0.07%	842.6	0.07%	0.07%
e360	Direct Access: ARCHER RAP	59	3,460.7	0.27%	3,460.7	0.27%	0.14%
e370	Direct Access: ARCHER RAP	149	877.9	0.07%	877.9	0.07%	0.16%
e371	Direct Access: ARCHER RAP	77	1,035.7	0.08%	1,035.7	0.08%	0.32%
e372	Direct Access: ARCHER RAP	8	7,210.9	0.57%	7,210.9	0.57%	0.31%
e373	Direct Access: ARCHER RAP	2	4.5	0.00%	4.5	0.00%	0.24%
e392	Direct Access: ARCHER RAP	308	10,418.2	0.82%	10,418.2	0.82%	0.35%
e393	Direct Access: ARCHER RAP	0	0.0	0.00%	0.0	0.00%	0.16%
e394	Direct Access: ARCHER RAP	0	0.0	0.00%	0.0	0.00%	0.14%
e396	Direct Access: ARCHER RAP	0	0.0	0.00%	0.0	0.00%	0.22%
e397	Direct Access: ARCHER RAP	5	464.5	0.04%	464.5	0.04%	0.13%
e398	Direct Access: ARCHER RAP	0	0.0	0.00%	0.0	0.00%	0.19%
e399	Direct Access: ARCHER RAP	107	1,367.9	0.11%	1,367.9	0.11%	0.22%
e400	Direct Access: ARCHER RAP	14	1.1	0.00%	1.1	0.00%	0.10%
e402	Direct Access: ARCHER RAP	45	8.1	0.00%	8.1	0.00%	0.06%
e359	Instant Access	1,058	1,613.2	0.13%	1,613.2	0.13%	0.12%
e368	Instant Access	0	0.0	0.00%	0.0	0.00%	0.01%
e369	Instant Access	0	0.0	0.00%	0.0	0.00%	0.01%
e374	Instant Access	41	14,141.7	1.11%	14,141.7	1.11%	0.36%
e376	Instant Access	23	367.7	0.03%	367.7	0.03%	0.26%
e379	Instant Access	0	0.0	0.00%	0.0	0.00%	0.02%
e380	Instant Access	43	16.5	0.00%	16.5	0.00%	0.01%
e381	Instant Access	9	37.0	0.00%	37.0	0.00%	0.02%
e383	Instant Access	48	345.8	0.03%	345.8	0.03%	0.01%
e384	Instant Access	0	0.0	0.00%	0.0	0.00%	0.02%
e386	Instant Access	31	207.3	0.02%	207.3	0.02%	0.02%

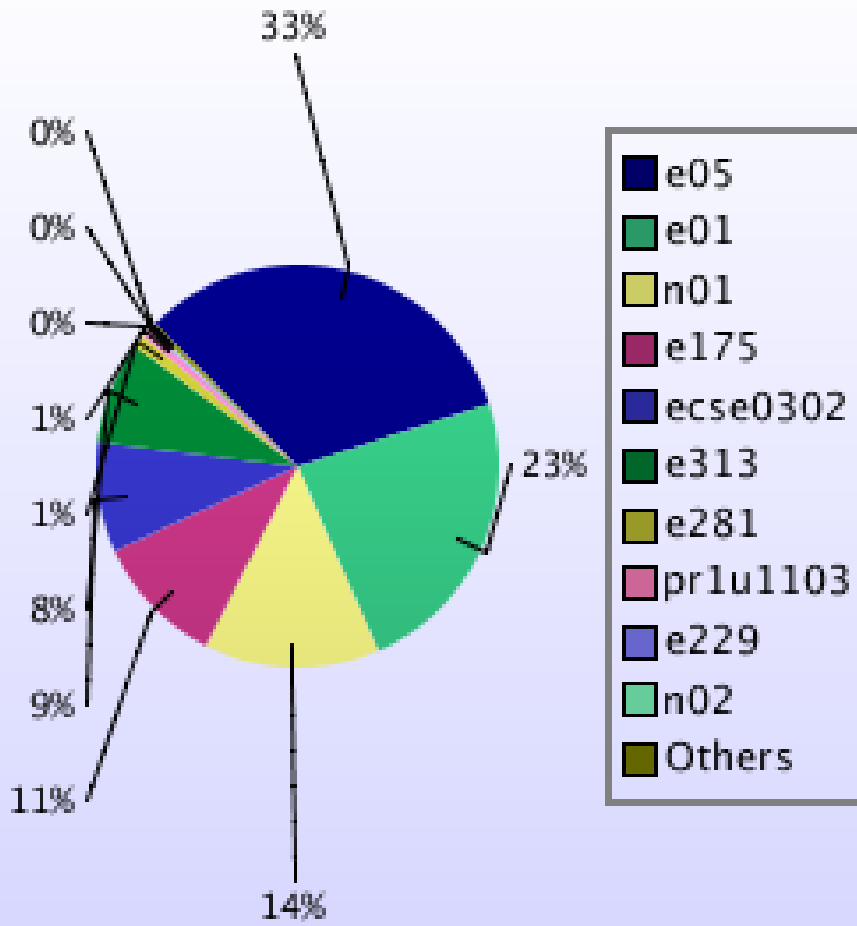
Project	Project Class	Number of Jobs	Charged kAUs	Charged Utilisation	Used kAUs	Utilisation	Allocation
e387	Instant Access	1	0.0	0.00%	0.0	0.00%	0.02%
e388	Instant Access	0	0.0	0.00%	0.0	0.00%	0.02%
e389	Instant Access	20	34.3	0.00%	35.4	0.00%	0.02%
e390	Instant Access	0	0.0	0.00%	0.0	0.00%	0.02%
e391	Instant Access	15	34.0	0.00%	34.0	0.00%	0.02%
e395	Instant Access	0	0.0	0.00%	0.0	0.00%	0.01%
e401	Instant Access	2	1.3	0.00%	1.3	0.00%	0.02%
e404	Instant Access	0	0.0	0.00%	0.0	0.00%	0.02%
e405	Instant Access	9	0.1	0.00%	0.2	0.00%	0.02%
e406	Instant Access	60	331.7	0.03%	331.7	0.03%	0.02%
e407	Instant Access	13	10.2	0.00%	10.2	0.00%	0.01%
e408	Instant Access	70	557.6	0.04%	557.6	0.04%	0.01%
e409	Instant Access	3	0.1	0.00%	0.1	0.00%	0.01%
r10	RDF: Pilot	0	0.0	0.00%	0.0	0.00%	0.00%
e382	Service	150	2,044.5	0.16%	2,044.5	0.16%	0.21%
EPSRC Total		56,690	676,434.2	53.04%	695,181.9	54.51%	60.46%
n01	Consortia	25,093	71,853.1	5.63%	75,329.5	5.91%	5.40%
n02	Consortia	8,738	195,841.8	15.36%	195,878.6	15.36%	8.17%
n03	Consortia	3,894	167,089.8	13.10%	167,113.3	13.10%	4.12%
NERC Total		37,725	434,784.8	34.09%	438,321.4	34.37%	17.70%
b14	Class1a	0	0.0	0.00%	0.0	0.00%	0.02%
b16	Class1a	0	0.0	0.00%	0.0	0.00%	0.03%
e329	Class1a	0	0.0	0.00%	0.0	0.00%	0.03%
BBSRC Total		0	0.0	0.00%	0.0	0.00%	0.08%
pr1u1103	DECI: EXEC	84	8,979.1	0.70%	9,146.0	0.72%	0.19%
pr1u1113	DECI: EXEC	3	749.4	0.06%	749.4	0.06%	0.28%
pr1u1114	DECI: EXEC	7	25.6	0.00%	25.6	0.00%	0.02%
pr1u1202	DECI: EXEC	34	4,671.6	0.37%	4,671.6	0.37%	0.41%
pr1u1204	DECI: EXEC	0	0.0	0.00%	0.0	0.00%	0.22%
pr1u1205	DECI: EXEC	26	20,650.5	1.62%	20,650.5	1.62%	0.12%
pr1u1211	DECI: EXEC	46	903.6	0.07%	903.6	0.07%	0.11%
pr1u1212	DECI: EXEC	69	7,312.6	0.57%	7,312.6	0.57%	0.15%
pr1u1213	DECI: EXEC	0	0.0	0.00%	0.0	0.00%	0.10%
pr1u1214	DECI: EXEC	41	25.2	0.00%	25.2	0.00%	0.04%
pr1u1215	DECI: EXEC	0	0.0	0.00%	0.0	0.00%	0.12%
pr1u1201	DECI: HOME	0	0.0	0.00%	0.0	0.00%	0.00%
pr1u1203	DECI: HOME	0	0.0	0.00%	0.0	0.00%	0.00%
pr1u1206	DECI: HOME	0	0.0	0.00%	0.0	0.00%	0.00%
pr1u1207	DECI: HOME	0	0.0	0.00%	0.0	0.00%	0.01%
pr1u1208	DECI: HOME	0	0.0	0.00%	0.0	0.00%	0.00%
pr1u1209	DECI: HOME	0	0.0	0.00%	0.0	0.00%	0.00%
pr1u1210	DECI: HOME	0	0.0	0.00%	0.0	0.00%	0.00%
PRACE Total		310	43,317.5	3.40%	43,484.5	3.41%	1.76%
ecse0101	eCSE	0	0.0	0.00%	0.0	0.00%	0.00%
ecse0102	eCSE	0	0.0	0.00%	0.0	0.00%	0.00%
ecse0103	eCSE	0	0.0	0.00%	0.0	0.00%	0.00%
ecse0105	eCSE	0	0.0	0.00%	0.0	0.00%	0.00%
ecse0110	eCSE	0	0.0	0.00%	0.0	0.00%	0.00%
ecse0113	eCSE	17	95.4	0.01%	95.9	0.01%	0.00%
ecse0115	eCSE	4	22.1	0.00%	22.1	0.00%	0.00%
ecse0117	eCSE	0	0.0	0.00%	0.0	0.00%	0.00%
ecse0118	eCSE	0	0.0	0.00%	0.0	0.00%	0.00%
ecse0119	eCSE	0	0.0	0.00%	0.0	0.00%	0.00%
ecse0202	eCSE	0	0.0	0.00%	0.0	0.00%	0.00%
ecse0203	eCSE	0	0.0	0.00%	0.0	0.00%	0.00%
ecse0206	eCSE	0	0.0	0.00%	0.0	0.00%	0.00%
ecse0208	eCSE	0	0.0	0.00%	0.0	0.00%	0.00%
ecse0209	eCSE	0	0.0	0.00%	0.0	0.00%	0.00%
ecse0211	eCSE	0	0.0	0.00%	0.0	0.00%	0.00%
ecse0213	eCSE	21	7.9	0.00%	7.9	0.00%	0.00%
ecse0215	eCSE	26	146.7	0.01%	146.7	0.01%	0.00%
ecse0217	eCSE	0	0.0	0.00%	0.0	0.00%	0.00%
ecse0301	eCSE	2	0.0	0.00%	0.0	0.00%	0.00%

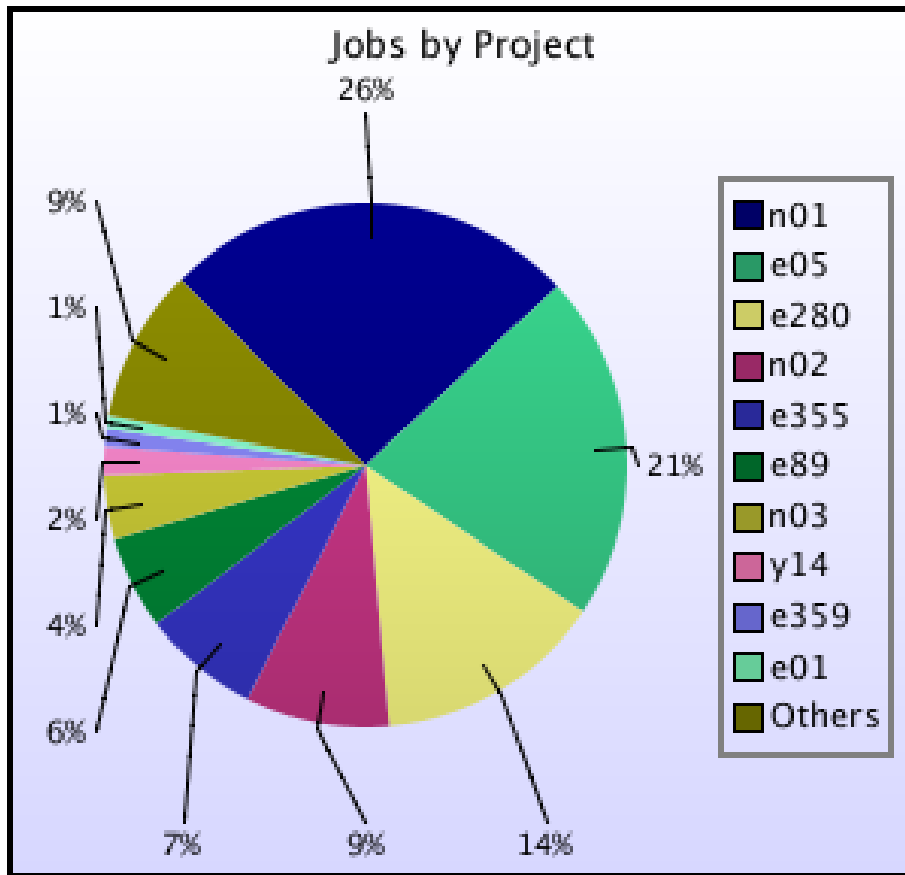
Project	Project Class	Number of Jobs	Charged kAUs	Charged Utilisation	Used kAUs	Utilisation	Allocation
ecse0302	eCSE	7	0.0	0.00%	2,177.7	0.17%	0.00%
ecse0303	eCSE	43	215.8	0.02%	215.8	0.02%	0.00%
ecse0307	eCSE	0	0.0	0.00%	0.0	0.00%	0.00%
ecse0308	eCSE	0	0.0	0.00%	0.0	0.00%	0.00%
ecse0309	eCSE	0	0.0	0.00%	0.0	0.00%	0.01%
ecse0310	eCSE	1	0.0	0.00%	0.0	0.00%	0.00%
ecse0313	eCSE	0	0.0	0.00%	0.0	0.00%	0.00%
ecse0404	eCSE	0	0.0	0.00%	0.0	0.00%	0.00%
ecsepr01	eCSE	0	0.0	0.00%	0.0	0.00%	0.01%
ecsepr02	eCSE	1	0.6	0.00%	0.6	0.00%	0.01%
ecsepr03	eCSE	0	0.0	0.00%	0.0	0.00%	0.01%
ecsepr04	eCSE	0	0.0	0.00%	0.0	0.00%	0.01%
ecsepr05	eCSE	0	0.0	0.00%	0.0	0.00%	0.01%
ecsepr06	eCSE	0	0.0	0.00%	0.0	0.00%	0.01%
ecsepr07	eCSE	0	0.0	0.00%	0.0	0.00%	0.01%
ecsepr08	eCSE	0	0.0	0.00%	0.0	0.00%	0.01%
ecsepr09	eCSE	0	0.0	0.00%	0.0	0.00%	0.01%
ecsepr10	eCSE	0	0.0	0.00%	0.0	0.00%	0.01%
ecsepr11	eCSE	0	0.0	0.00%	0.0	0.00%	0.01%
ecsepr12	eCSE	0	0.0	0.00%	0.0	0.00%	0.01%
ecsepr13	eCSE	0	0.0	0.00%	0.0	0.00%	0.01%
ecsepr14	eCSE	0	0.0	0.00%	0.0	0.00%	0.01%
ecsepr15	eCSE	32	103.0	0.01%	103.0	0.01%	0.01%
ecsepr16	eCSE	0	0.0	0.00%	0.0	0.00%	0.01%
ecseta01	eCSE	0	0.0	0.00%	0.0	0.00%	0.01%
ecseta02	eCSE	0	0.0	0.00%	0.0	0.00%	0.01%
ecseta03	eCSE	0	0.0	0.00%	0.0	0.00%	0.01%
eCSE Total		154	591.5	0.05%	2,769.7	0.22%	0.22%
d43	ECDF	69	1,668.5	0.13%	1,668.5	0.13%	0.80%
d25	Research	17	259.5	0.02%	259.5	0.02%	0.10%
d35	Research	95	719.7	0.06%	719.7	0.06%	0.02%
d37	Research	0	0.0	0.00%	0.0	0.00%	0.09%
d41	Research	0	0.0	0.00%	0.0	0.00%	0.03%
d56	Research	621	3,640.5	0.29%	3,640.5	0.29%	0.26%
d57	Research	11	40.3	0.00%	40.3	0.00%	0.00%
d60	Research	0	0.0	0.00%	0.0	0.00%	0.00%
d61	Research	0	0.0	0.00%	0.0	0.00%	0.00%
d62	Research	16	3.0	0.00%	3.0	0.00%	0.02%
d63	Research	0	0.0	0.00%	0.0	0.00%	0.02%
d64	Research	0	0.0	0.00%	0.0	0.00%	0.02%
d65	Research	14	1.3	0.00%	1.3	0.00%	0.48%
d66	Research	0	0.0	0.00%	0.0	0.00%	0.00%
d67	Research	3	0.0	0.00%	22.2	0.00%	0.01%
d69	Research	0	0.0	0.00%	0.0	0.00%	0.01%
d70	Research	105	649.4	0.05%	649.4	0.05%	0.01%
d71	Research	0	0.0	0.00%	0.0	0.00%	0.10%
d72	Research	38	22.5	0.00%	22.5	0.00%	0.05%
d73	Research	21	4,076.6	0.32%	4,076.6	0.32%	0.75%
d75	Research	20	140.8	0.01%	123.5	0.01%	0.01%
d76	Research	0	0.0	0.00%	0.0	0.00%	0.01%
e324	Research	34	2,073.6	0.16%	2,073.6	0.16%	0.04%
i01	Industrial	0	0.0	0.00%	0.0	0.00%	0.00%
i02	Industrial	0	0.0	0.00%	0.0	0.00%	0.00%
i03	Industrial	0	0.0	0.00%	0.0	0.00%	0.14%
i04	Industrial	0	0.0	0.00%	0.0	0.00%	0.00%
i06	Industrial	0	0.0	0.00%	0.0	0.00%	0.00%
i10	Industrial	0	0.0	0.00%	0.0	0.00%	0.00%
i13	Industrial	16	0.2	0.00%	0.2	0.00%	0.00%
i15	Industrial	0	0.0	0.00%	0.0	0.00%	0.02%
i16	Industrial	0	0.0	0.00%	0.0	0.00%	0.00%
i17	Industrial	7	1.5	0.00%	1.5	0.00%	0.00%
x06	Industrial	0	0.0	0.00%	0.0	0.00%	0.00%
x08	Industrial	10	3.3	0.00%	3.3	0.00%	0.00%

Project	Project Class	Number of Jobs	Charged kAUs	Charged Utilisation	Used kAUs	Utilisation	Allocation
d59	Training	15	0.6	0.00%	0.6	0.00%	0.02%
d68	Training	3	1.3	0.00%	1.3	0.00%	0.03%
d74	Training	136	14.5	0.00%	14.5	0.00%	0.01%
d39	Service	0	0.0	0.00%	0.0	0.00%	0.01%
d77	Service	8	17.4	0.00%	17.4	0.00%	0.00%
i14	Service	0	0.0	0.00%	0.0	0.00%	0.03%
y01	Service	0	0.0	0.00%	0.0	0.00%	0.01%
y02	Service	3	0.2	0.00%	0.2	0.00%	0.04%
y07	Service	12	0.7	0.00%	0.8	0.00%	0.00%
z02	Service	1	0.1	0.00%	0.1	0.00%	0.02%
z99	Service	22	0.5	0.00%	0.5	0.00%	0.00%
DirectorsTime Total		1,297	13,335.9	1.05%	13,340.9	1.05%	3.19%
y14	Training	1,717	1,739.3	0.14%	1,208.5	0.09%	0.02%
z01	Service	260	6,104.4	0.48%	6,104.7	0.48%	0.55%
CSE Total		1,977	7,843.7	0.62%	7,313.3	0.57%	0.57%
w01	Service	0	0.0	0.00%	0.0	0.00%	0.01%
w02	Service	0	0.0	0.00%	0.0	0.00%	0.01%
w03	Service	4	34.6	0.00%	34.6	0.00%	0.01%
w04	Service	3	744.1	0.06%	744.1	0.06%	0.01%
w05	Service	36	46.6	0.00%	46.6	0.00%	0.01%
y21	Service	0	0.0	0.00%	0.0	0.00%	0.01%
z14	Service	0	0.0	0.00%	0.0	0.00%	0.02%
Internal Total		43	825.3	0.06%	825.3	0.06%	0.09%
Total		98,196	1,177,132.9	92.31%	1,201,237.0	94.20%	84.08%



Uncharged Use by Project

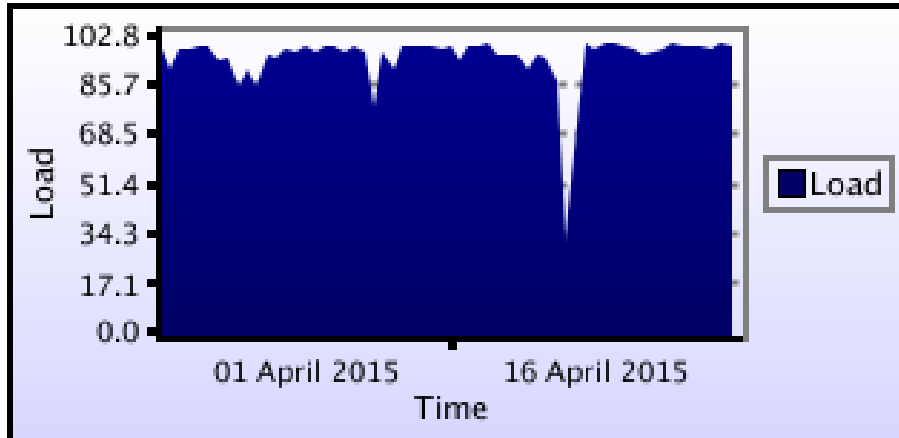




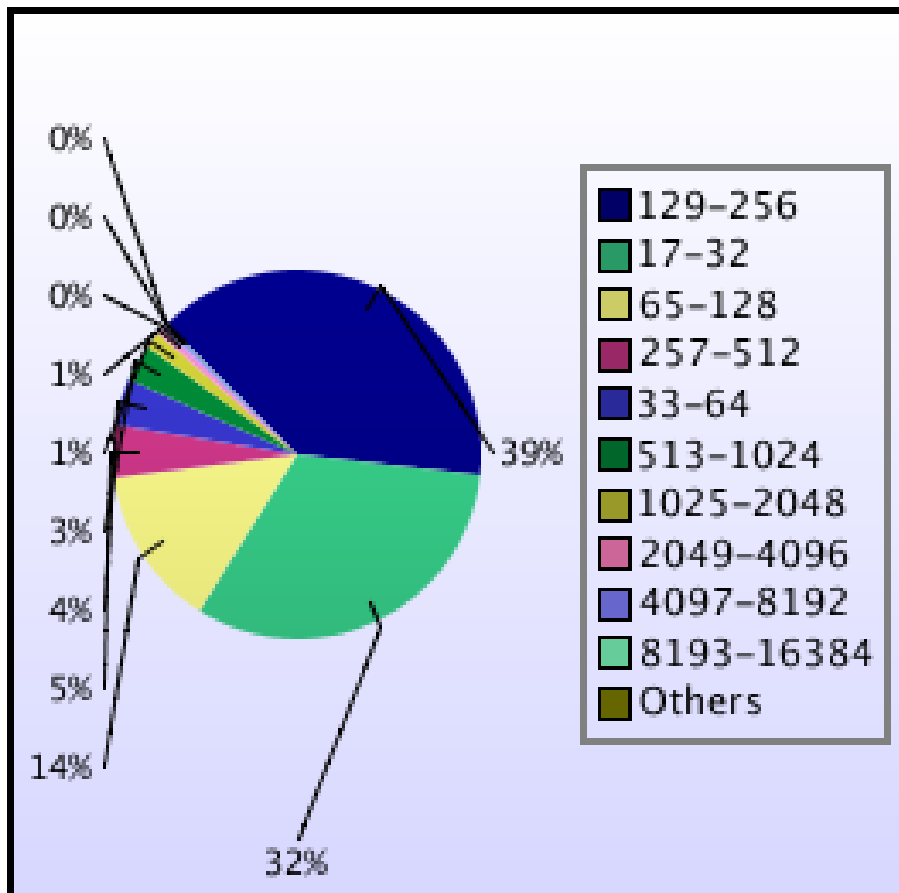
kAUs (by Size)

Size	kAUs	Number of Jobs
1-32	7,935.883	31,568
33-64	12,034.545	3,978
65-128	63,699.773	13,827
129-256	145,681.237	38,548
257-512	160,881.936	4,527
513-1024	249,058.77	3,202
1025-2048	161,607.87	1,446
2049-4096	156,931.581	589
4097-8192	142,884.411	357
8193-16384	66,506.724	121
16385-32768	1,111.474	17
32769-65536	7,138.204	3

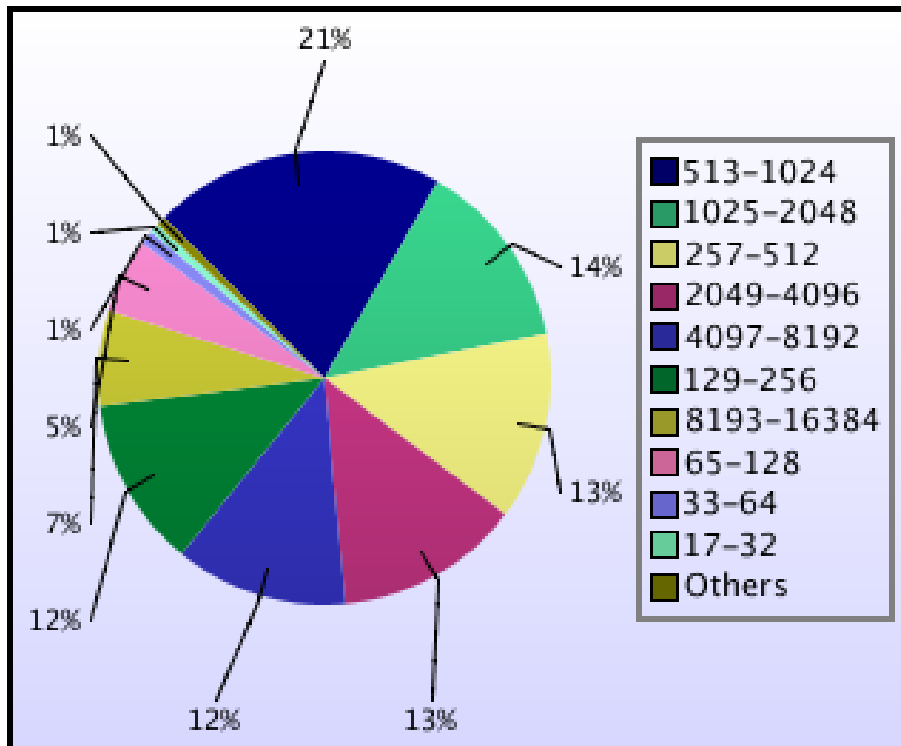
Load plots



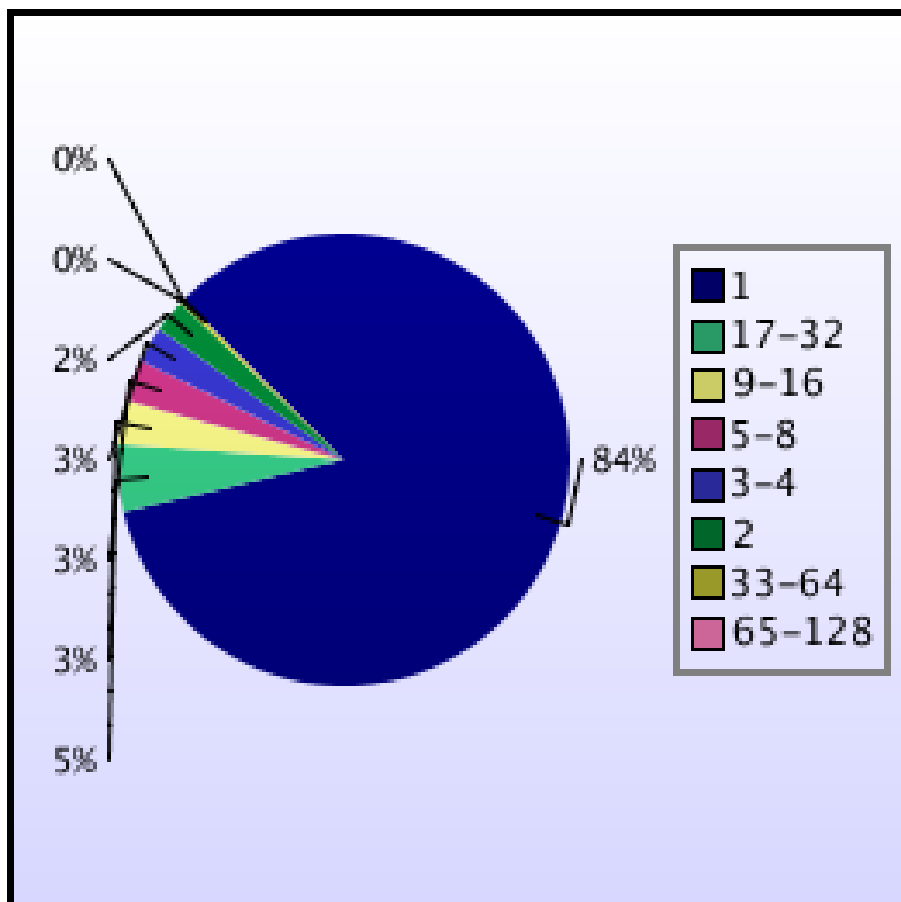
Percentage load on machine



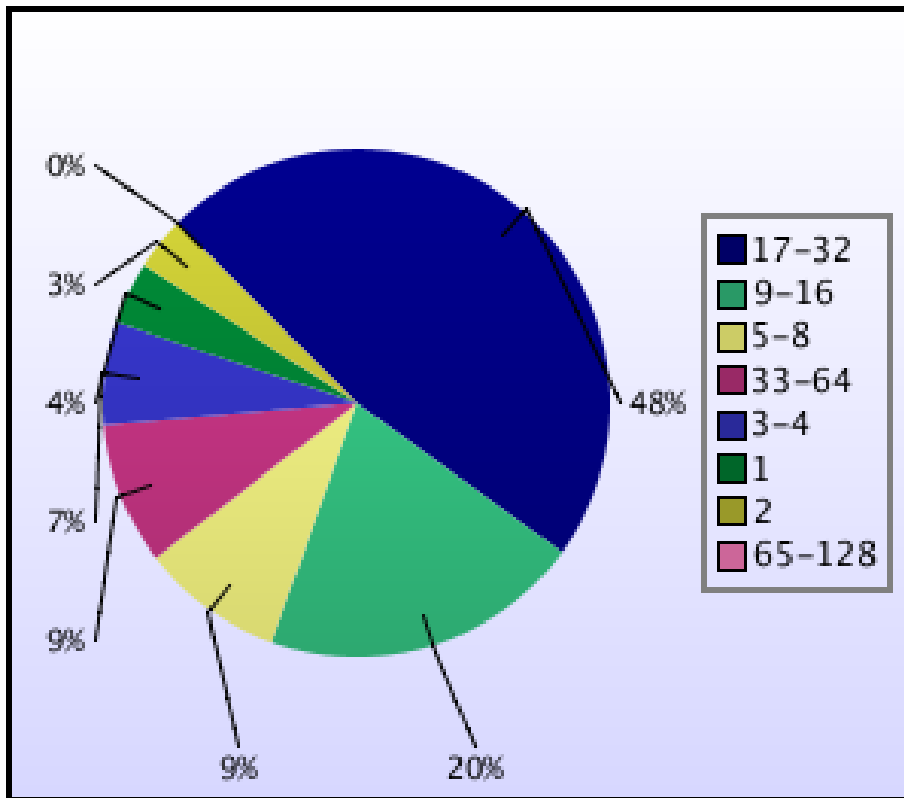
Jobs by Size



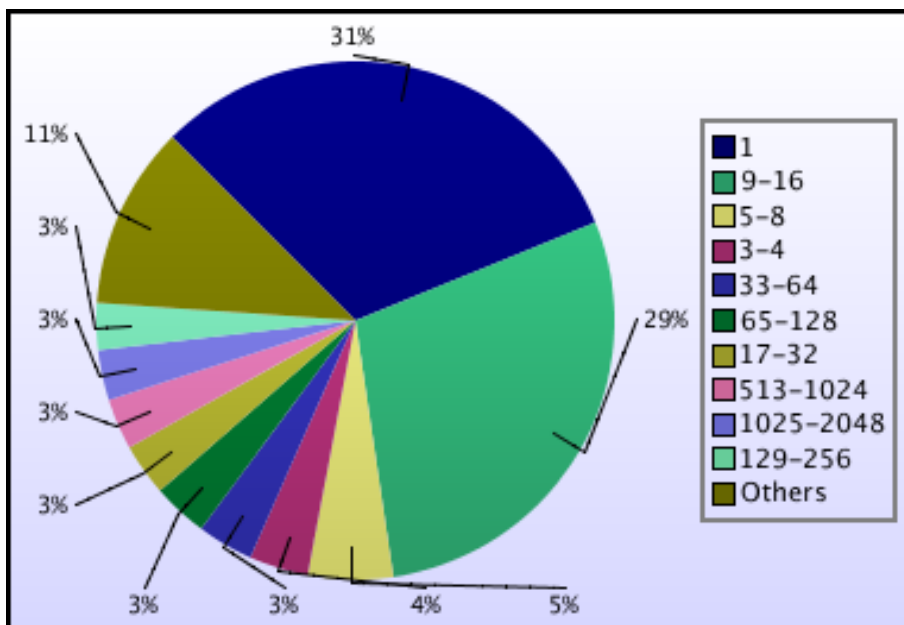
kAUs used by Size



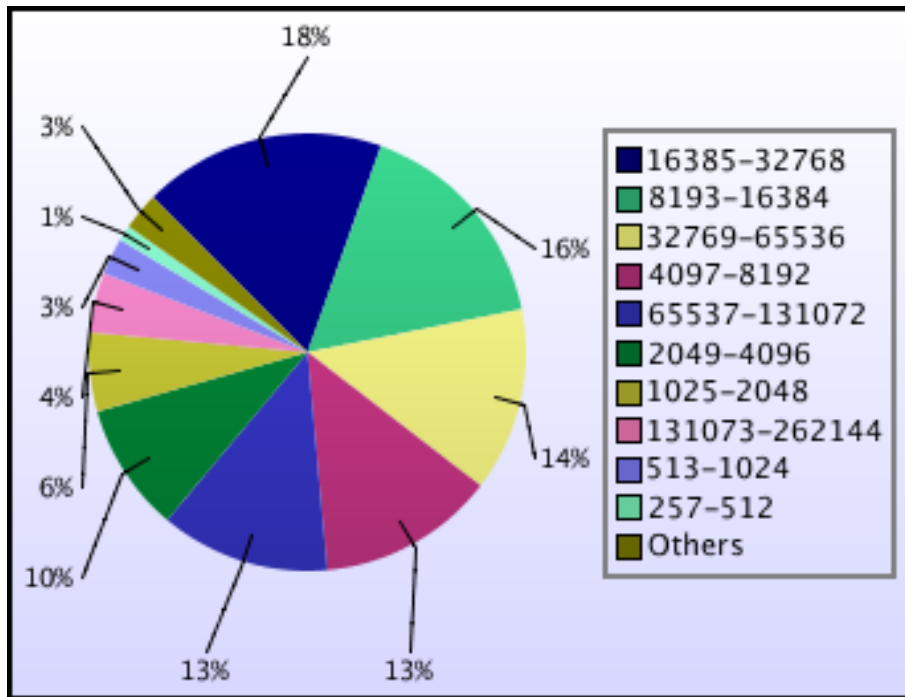
Jobs grouped by wall-clock-hours



kAUs used grouped by wall-clock-hours



Jobs grouped by core-hours

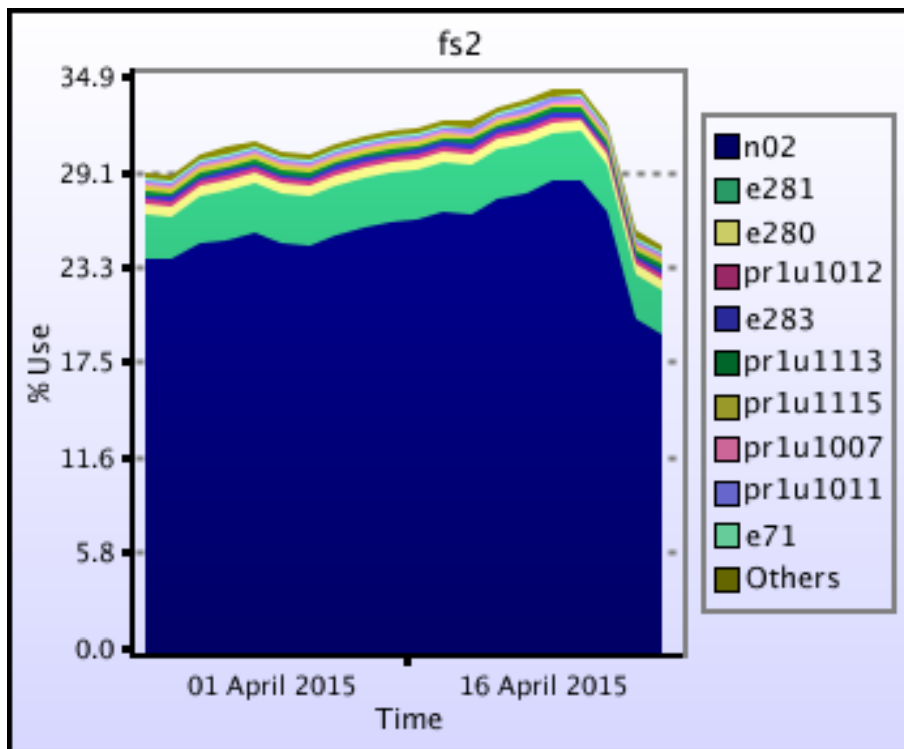


kAUs used grouped by core-hours

Disk usage

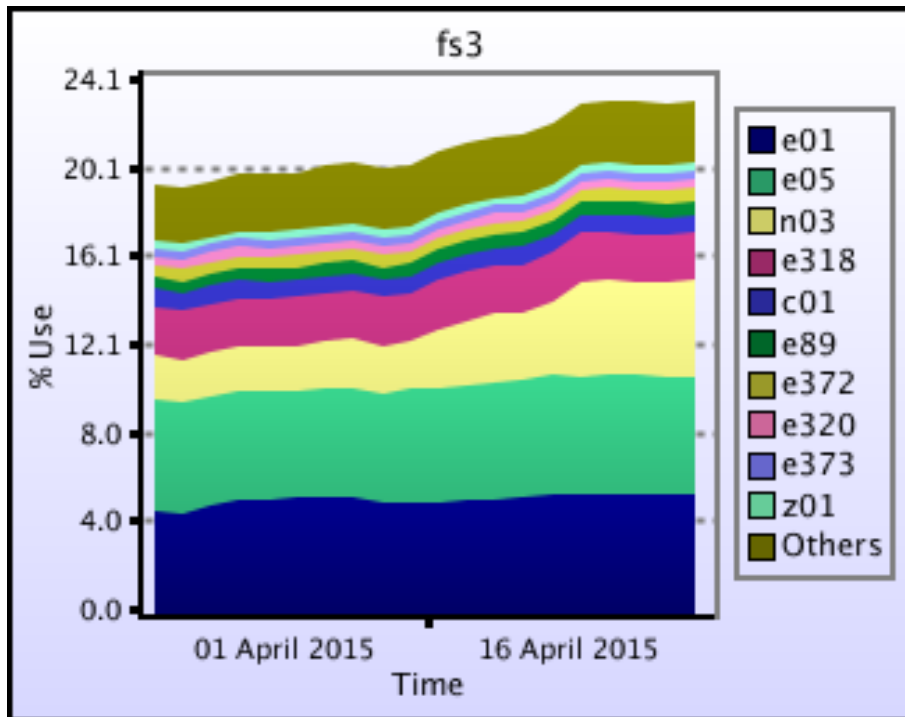
Disk usage for work (fs2)

This is a plot of Disk Use on fs2 against time. The plot is divided into a number of classes according to Project. This is a stacked plot so the top of the plot represents the total usage at a given time.



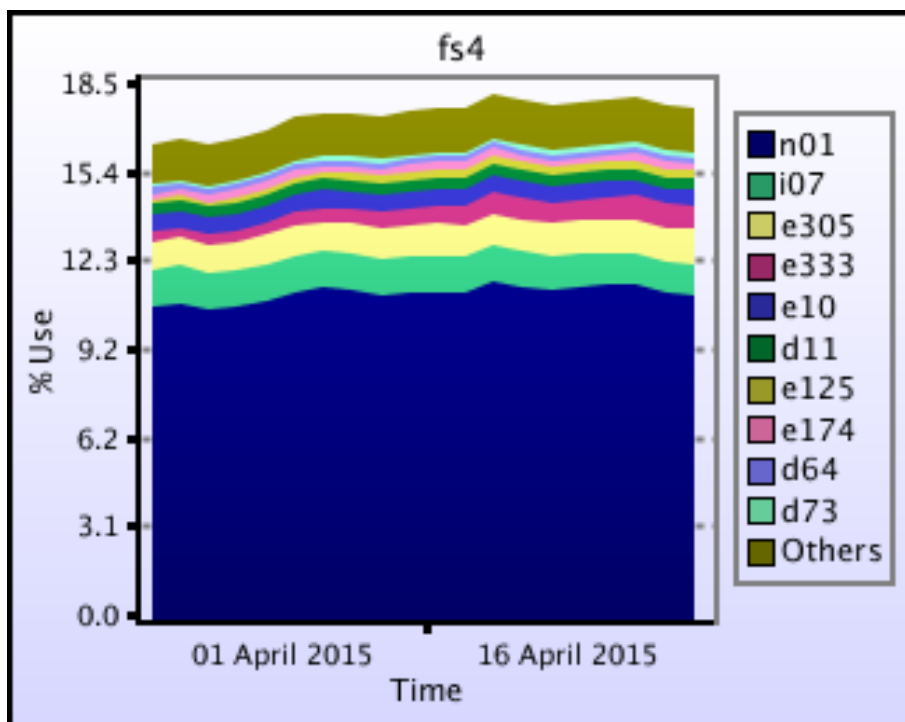
Disk usage for work (fs3)

This is a plot of Disk Use on fs3 against time. The plot is divided into a number of classes according to Project. This is a stacked plot so the top of the plot represents the total usage at a given time.



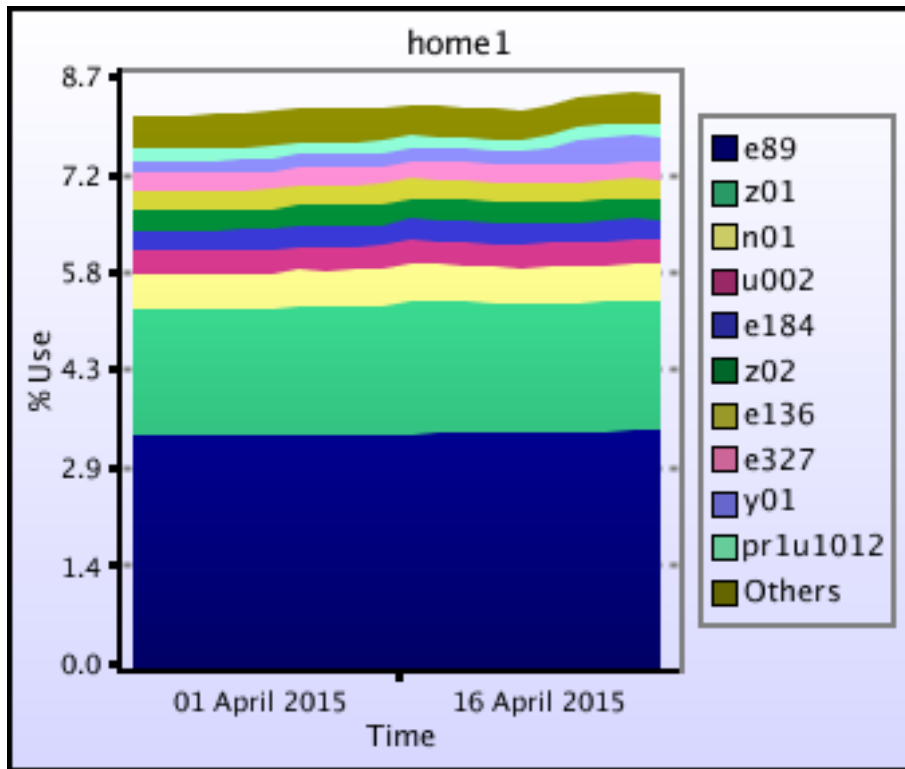
Disk usage for work (fs4)

This is a plot of Disk Use on fs4 against time. The plot is divided into a number of classes according to Project. This is a stacked plot so the top of the plot represents the total usage at a given time.



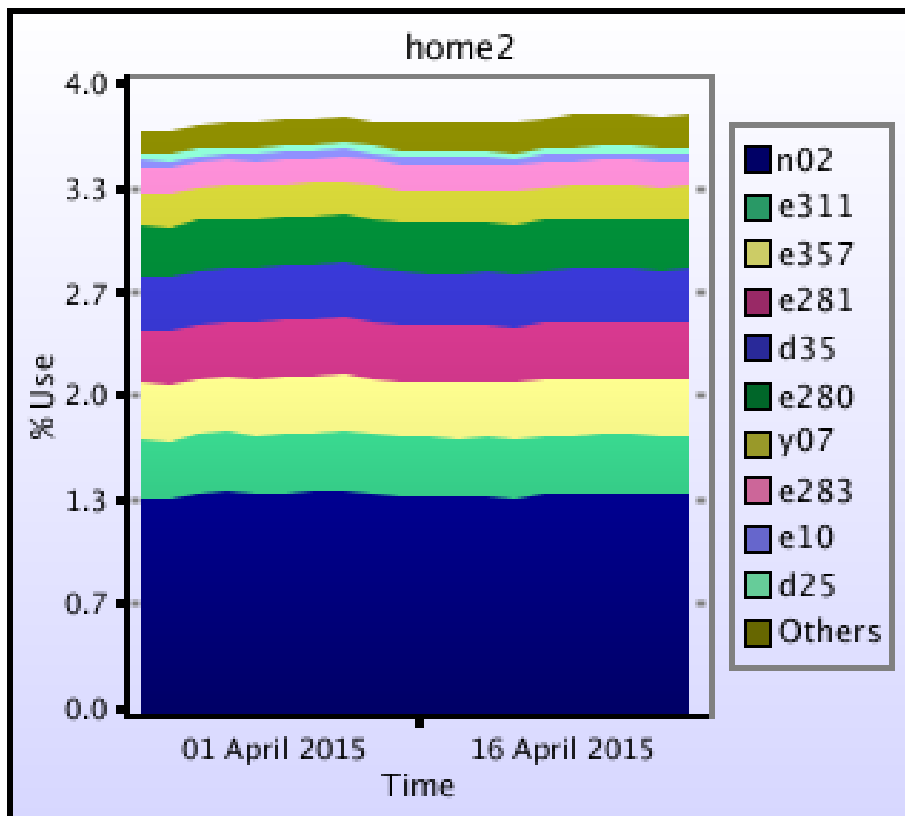
Disk usage for home (home1)

This is a plot of Disk Use on home1 against time. The plot is divided into a number of classes according to Project. This is a stacked plot so the top of the plot represents the total usage at a given time.



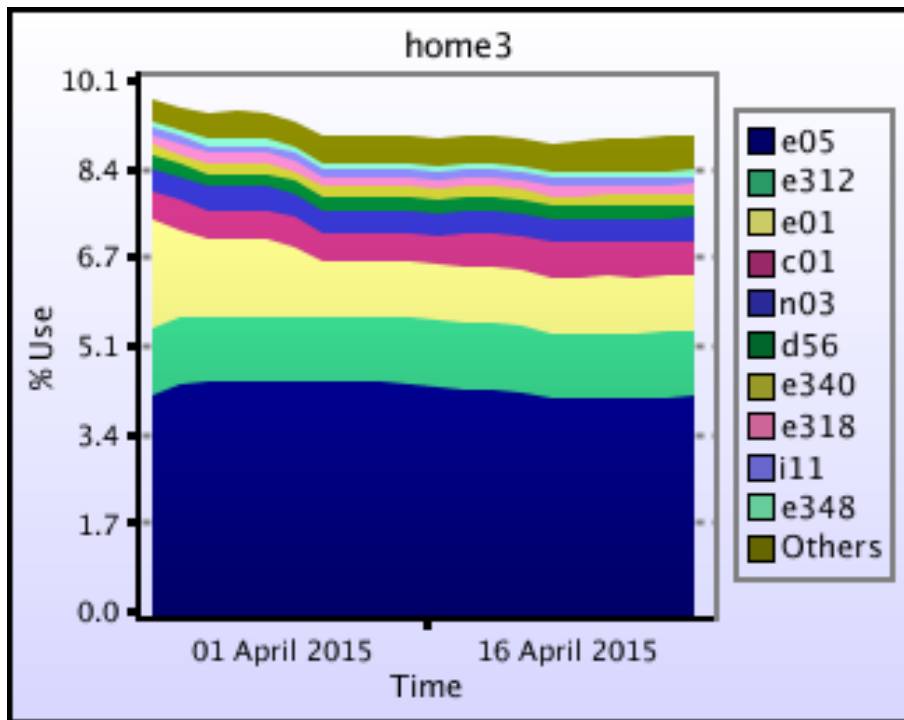
Disk usage for home (home2)

This is a plot of Disk Use on home2 against time. The plot is divided into a number of classes according to Project. This is a stacked plot so the top of the plot represents the total usage at a given time.



Disk usage for home (home3)

This is a plot of Disk Use on home3 against time. The plot is divided into a number of classes according to Project. This is a stacked plot so the top of the plot represents the total usage at a given time.



Disk usage for home (home4)

This is a plot of Disk Use on home4 against time. The plot is divided into a number of classes according to Project. This is a stacked plot so the top of the plot represents the total usage at a given time.

