

High-Performance Computing (HPC)

What is it and why do we care?

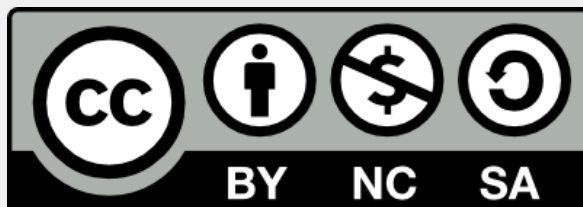
Partners



Funding



Reusing this material



This work is licensed under a Creative Commons Attribution-NonCommercial-ShareAlike 4.0 International License.

http://creativecommons.org/licenses/by-nc-sa/4.0/deed.en_US

This means you are free to copy and redistribute the material and adapt and build on the material under the following terms: You must give appropriate credit, provide a link to the license and indicate if changes were made. If you adapt or build on the material you must distribute your work under the same license as the original.

Defining HPC

Q: What is high-performance computing?

Defining HPC

Q: What is high-performance computing?

A: Using a high-performance computer (a supercomputer)...

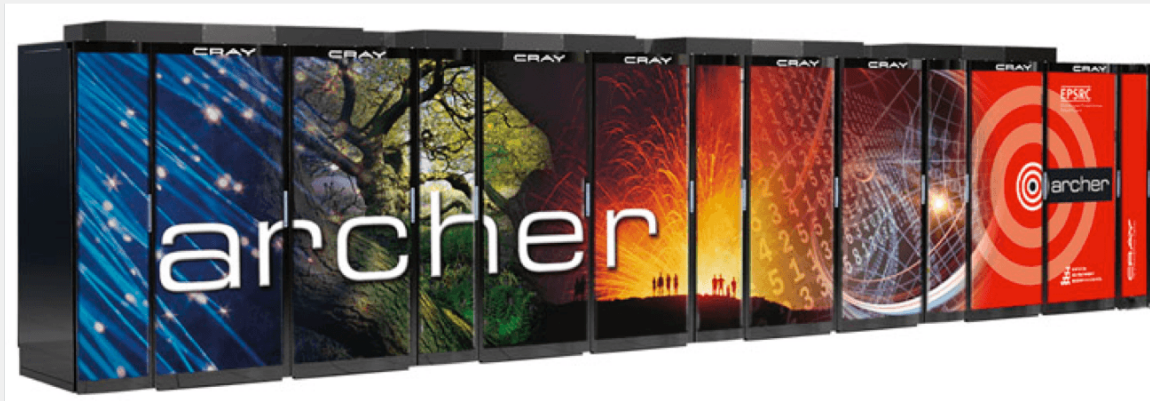
Defining HPC

Q: What is a high-performance computer?

Defining HPC

Q: What is a high-performance computer?

A:



Defining HPC

Q: What is a high-performance computer?

A: a machine that combines a large number* of processors and makes their combined computing power available to use

Based fundamentally on *parallel computing*: using many processors (cores**) at the same time to solve a problem

* this number keeps on increasing over time

** define cores vs processors clearly in lecture on hardware building blocks

Generic Parallel Machine (computer cluster)

- Rough conceptual model is a collection of laptops
- Connected together by a network so they can all communicate

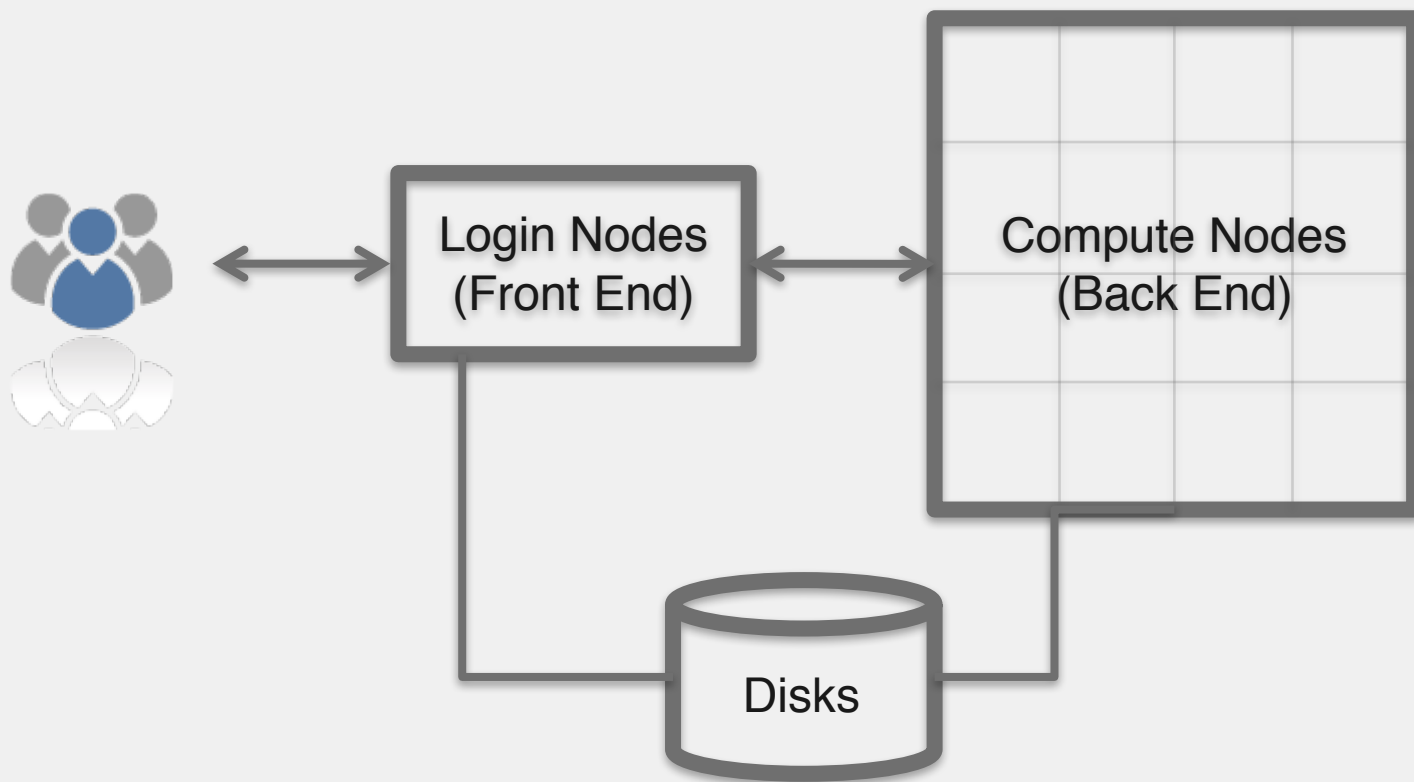


- Each laptop is a *compute node*
 - has a processor, hard disk, memory, ...
 - Each runs a copy of an operating system (Linux)
 - If each processor has 4 cores, total system has 20 cores

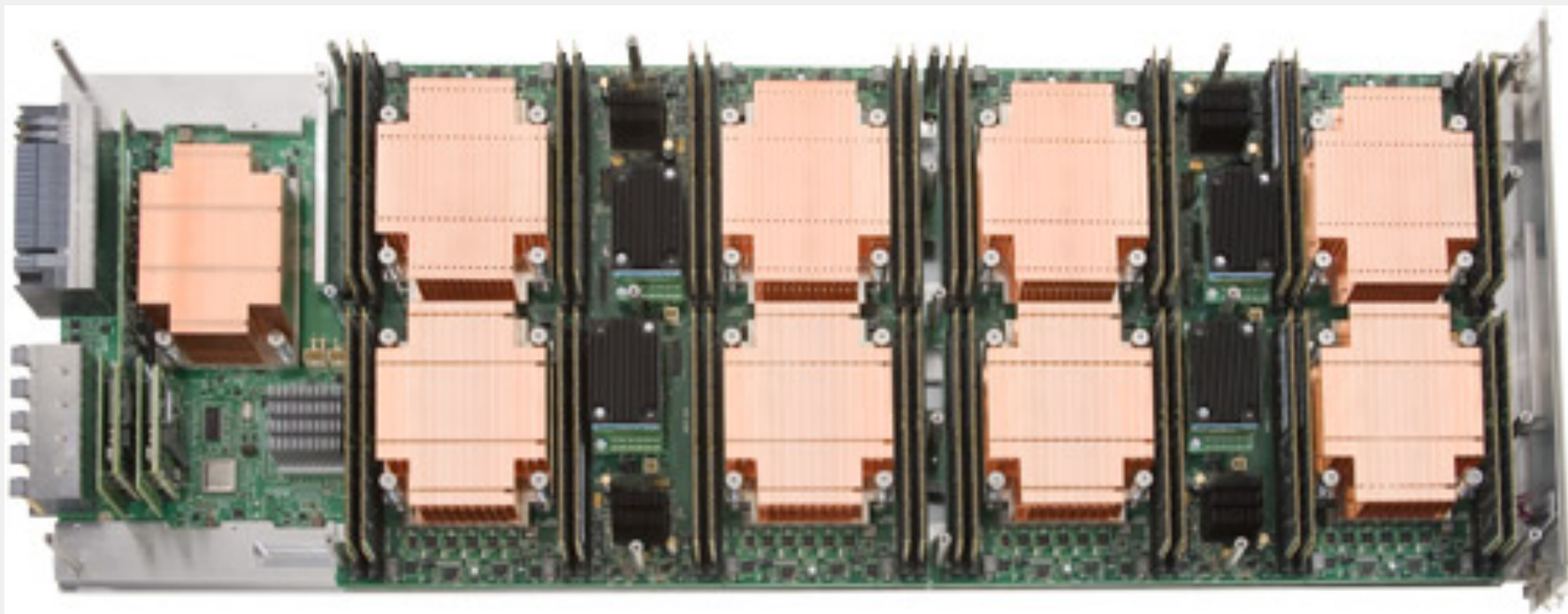
HPC architectures

- Majority of HPC machines follow this generic conceptual layout for a computer cluster:
 - many compute nodes connected together by a network
 - each compute node has separate, independent memory
- Some smaller HPC machines allow many processors to all access the same shared memory
 - allows some software to run in parallel with fewer modifications
 - convenient for many data-intensive applications
 - including bioinformatics/genomics
 - difficult / expensive to scale this approach to very many processors

Typical HPC system layout



HPC hardware (ARCHER - Cray XC30)



- One blade has four compute nodes
- Each node has two processors and 64GB of memory
- Each processor has 12 cores

HPC hardware (ARCHER - Cray XC30)



A blade being slotted into a cabinet.

Each cabinet can hold up to 48 blades

ARCHER has 26 cabinets

The scale of HPC

- ARCHER has:
 - ~5000 nodes
 - ~118 000 cores
- like 30 000 quadcore laptops connected together (!)
- Largest systems globally currently (2017) have hundreds of thousands up to millions of cores
- HPC systems offer a large amount of computing power
- Dominant platforms for computational science

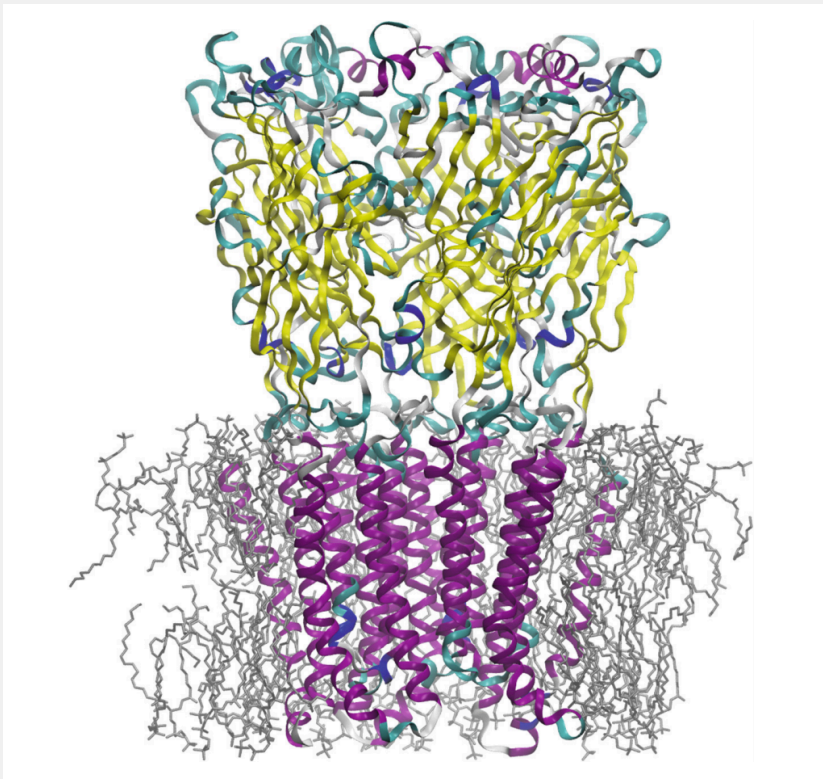
Who uses HPC?

- Traditionally used for:
 - materials science / solid state physics
 - computational chemistry
 - biomolecular simulation
 - particle physics
 - environmental modelling
 - weather & climate
 - geosciences
 - oceanography
 - many engineering applications

e.g. on ARCHER see <http://archer.ac.uk/status/codes/>

Examples

biomolecular simulation:



Ligand-gated ion-channel membrane protein GLIC (colored), embedded in a lipid membrane (grey), solvated in water (not shown)

145,000 atoms

Taken from:

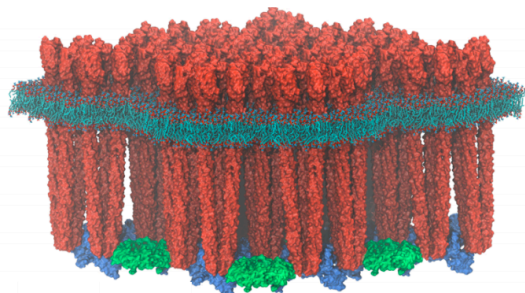
https://doi.org/10.1007/978-3-319-15976-8_1

(Lindahl E. *et al.*) (2015) Tackling Exascale Software Challenges in Molecular Dynamics Simulations with GROMACS. In: Markidis S., Laure E. (eds) Solving Software Challenges for Exascale. EASC 2014. Lecture Notes in Computer Science, vol 8759

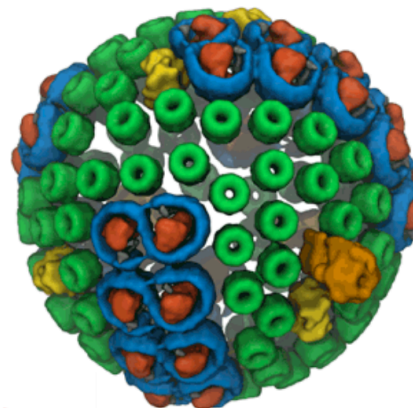
Examples

biomolecular simulation:

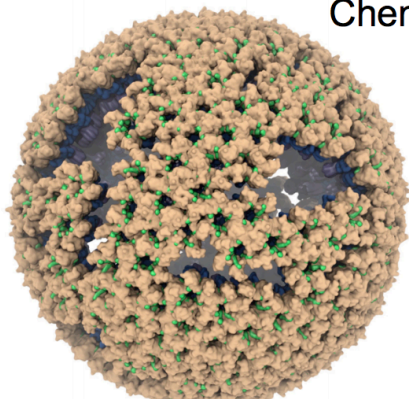
A Sampling of Petascale Projects Using NAMD



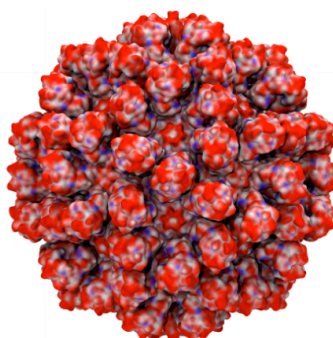
Chemosensory Array



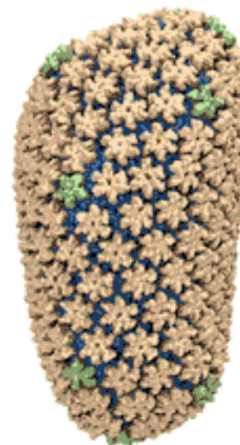
Chromatophore



Rous Sarcoma Virus



Rabbit Hemorrhagic Disease



HIV

HPC networking

- HPC relies on fast communications between nodes to allow applications to use many processors in parallel
- Networking hardware and software protocols need to be good enough to avoid becoming a bottleneck, and robust under heavy load
- Ethernet is cheap, used in small / lower performance systems
- High-end HPC systems use specialised network designs (e.g. Infiniband)
 - optimised communication protocols and connection topologies
 - special copper & fibre wiring
 - expensive!

HPC vs other types of computing

- HPC is one extreme in a continuum of computing:
 - Individual desktop/laptop
 - University research group / departmental machine (server or cluster)
 - University-wide, regional or national-level HPC machine
- Commercial datacentres (Amazon, Google, Facebook, etc.) have enormous computing clusters
 - These do not cater for scientific computing
- HPC machines optimised for traditional science applications:
 - strong floating-point performance (“number crunching”)
 - fast networking
 - software stack that includes scientific / maths libraries

HPC vs other types of computing

- HPC offers *capability computing*:
 - ability to solve very large / complex scientific problems quickly
- Can also use HPC for *capacity computing*:
 - many small / simple problems
 - this may be cheaper on generic computing clusters or cloud computing!
 - usage of ARCHER is charged starting at a minimum of 1 node (24 cores)

HPC and me

- HPC platforms try to cater for a broad range of computational needs, and have co-evolved with their user communities
 - Optimised for certain problem categories
 - Established usage models and conventions
- Scientific software and its users have also had to adapt to make use of HPC
 - Molecular dynamics software heavily optimised to use HPC machines
- HPC continues to evolve
 - Data-centric computing increasingly important (bioinformatics a big driver)